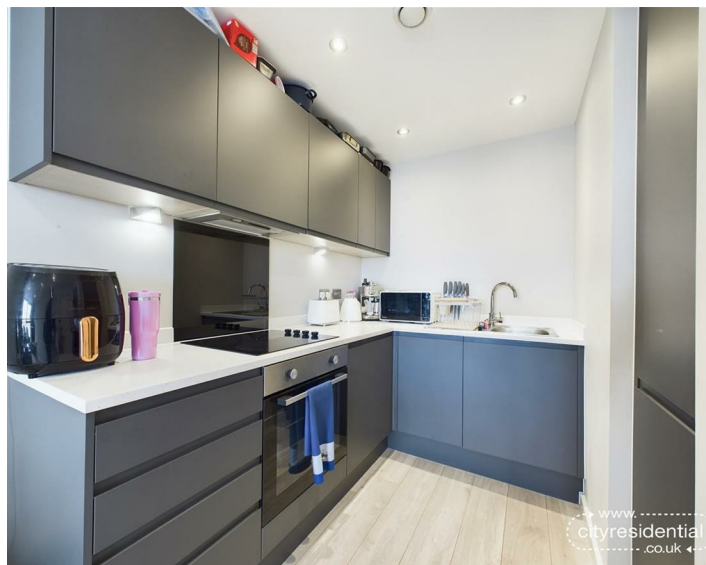




107 Park Central, Liverpool, L3 0AY

Asking Price £120,000 Leasehold

www.cityresidential.co.uk



About the Property

Bright, airy and deceptively spacious!

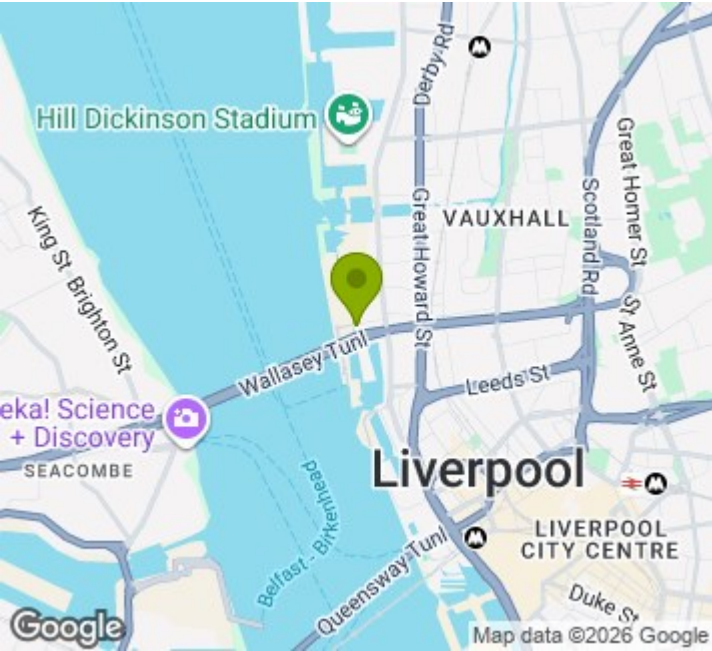
City Residential are delighted to offer for sale this fantastic one bedroom property. Located on Jesse Hartley Way, Park Central is part of the Liverpool Waters multimillion pound plan to expand the city along Liverpool's famous and historic docklands.

The apartment is well proportioned and is finished to a high standard throughout and briefly comprises; Entrance hall, lounge/dining area, modern fitted kitchen, double bedroom with fitted robes and shower room.

We expect high demand for this property, therefore early viewing is advised to avoid disappointment.

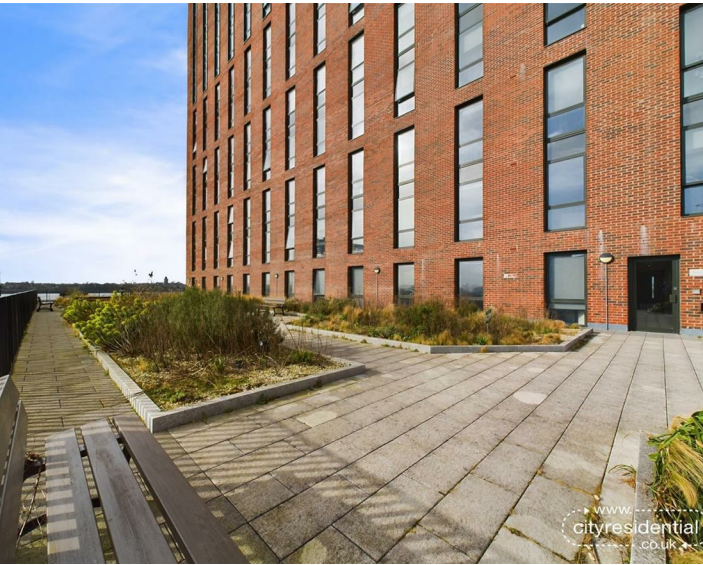
This ideal investment or first home opportunity is not to be missed!

- Spacious 1 bedroom apartment
- Ideal first home or investment opportunity
- Modern kitchen with integrated appliances
- Liverpool Waters location
- Chain free
- Leasehold



Energy Efficiency Rating

	Current	Potential
Very energy efficient - lower running costs		
(92 plus) A		
(81-91) B	81	81
(69-80) C		
(55-68) D		
(39-54) E		
(21-38) F		
(1-20) G		
Not energy efficient - higher running costs		
England & Wales	EU Directive 2002/91/EC	



City Residential
81/87 Victoria Street, The Old Haymarket, Liverpool L1 6DG
T: 0151 231 6100 F: 0151 231 6105
E: sales@cityresidential.co.uk



WWW.
cityresidential
.co.uk